



THE PRESERVE

AT PERRY FARM



Custom Build Package

*Lot #12, The Preserve
Charlotte, Vermont*

www.thepreservevt.com

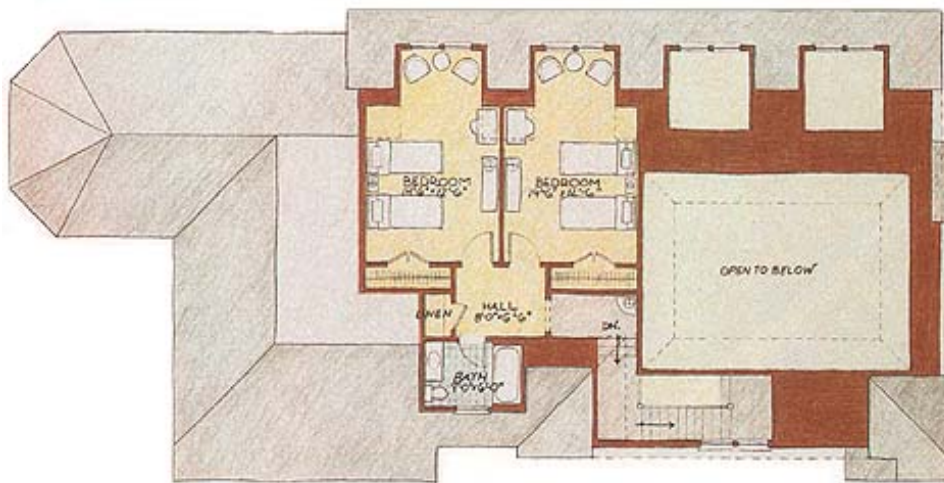


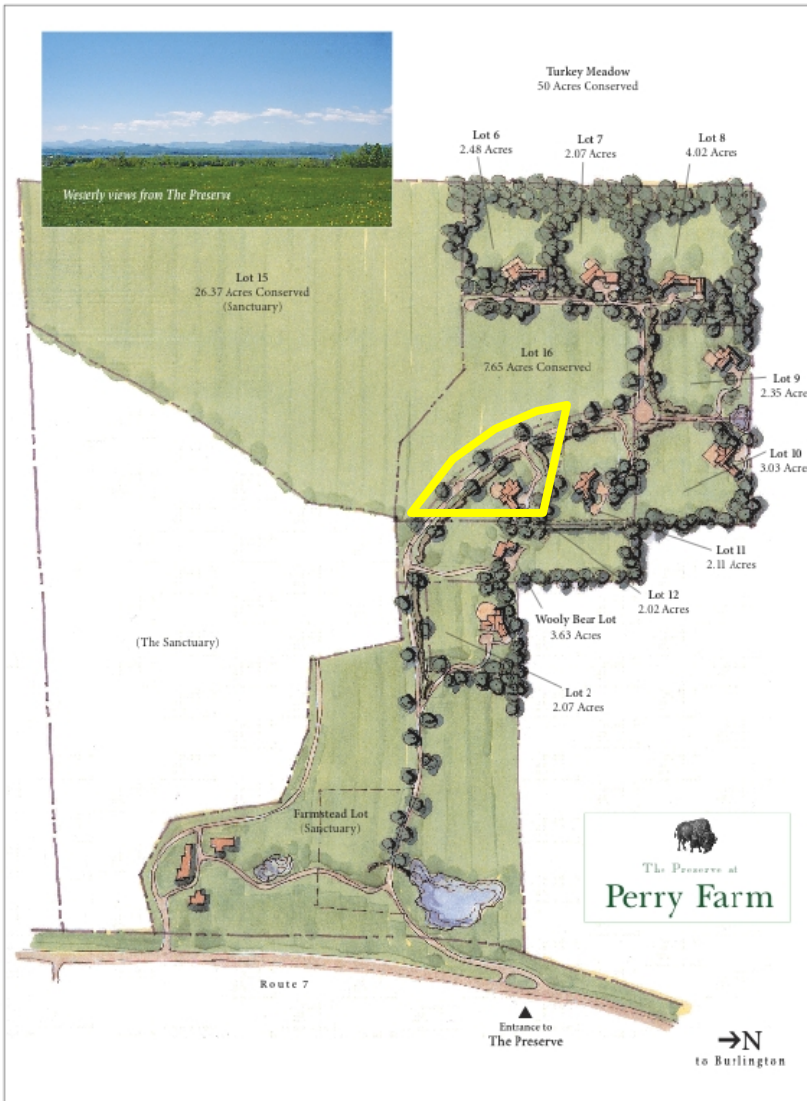
Craftsmanship. Design. Commitment.

Based on an award-winning design from architect Robert A.M. Stern, this home features thoughtful touches throughout. As built by Hubbard Construction, one of Vermont's premier builders of luxury homes, it will include a master suite, formal dining room, sunroom, a welcoming porch with views over Lake Champlain, and a shingled exterior at once simple and elegant.



Please note that the photos here are for illustration purposes only; your home will be custom built for you based on these plans and your discussions with Hubbard Construction.



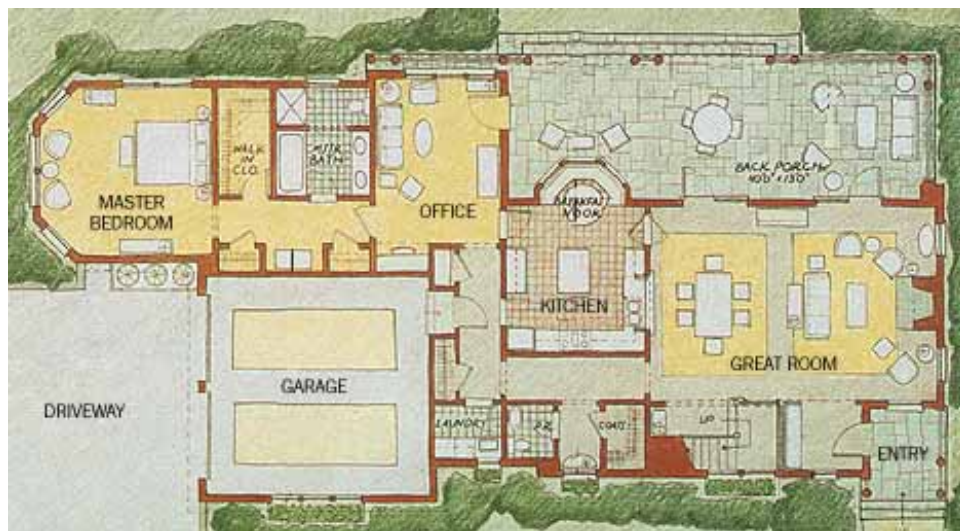


Our Location

Just two miles south of Shelburne, The Preserve is surrounded by conserved farmland protecting Chittenden County's most dramatic views. With only nine home sites on 80 acres, this is a very special offering.

Lot 12

Situated on a rise just above a large parcel of open land in the center of The Preserve, Lot 12 is two acres of land with panoramic views of Lake Champlain, the Adirondacks, and the Green Mountains.





Please contact us to discuss the process of building a custom home or for more information regarding The Preserve. More copies of this document are available from our website at www.ThePreserveVT.com.



Brian Boardman

346 Shelburne Road, Burlington, Vermont 05401
(802)846-9523

brian@brianboardmanvt.com
www.BrianBoardmanVt.com

**COLDWELL
BANKER**

HICKOK & BOARDMAN
REALTY